



CRESCENT

Storage





TABLE OF CONTENTS

Chests..... 4	Topsides 26
Site-Vault™ Heavy-Duty Chests 5	Aluminum.....26
Tradesman Steel Chests 6	Steel.....27
High-Capacity Drop-Front Chest 7	
Slope Lid Chest 7	Drawer Storage..... 33
Welder’s Box 8	Long Stacked Models33
Embedded Lock Small Chest.....8	Long Floor Models.....34
	Tall Drawer Units.....35
Piano Boxes 9	Truck Chests 29
Site-Vault™ Piano Boxes..... 10	Gear-Lock™ Aluminum.....29
Heavy Duty Piano Box.....11	Aluminum.....30
	Steel.....31
Field Offices 12	Portable31
Field Office12	
Mobile Field Office12	Underbed Boxes 27
Tradesman Office12	Mounting Brackets.....28
Cabinets 13	Trailer Tongue Boxes 33
Mesh Cabinets.....14	Aluminum Tongue Boxes.....33
Heavy-Duty Cabinets.....15	
Extra Heavy-Duty Bin Cabinet15	Transfer Tanks 36
Rolling Clam Shell Cabinet16	Aluminum Liquid Transfer Tanks ..36
Rolling Work Benches16	Fuel-N-Tool Transfer Tank 37
Drawer Cabinet.....16	Steel Transfer Tanks 37
Crossovers..... 17	Tool Bags..... 38
Gear-Lock™ Aluminum.....17	Tradesman Backpack.....38
Gear-Lock™ Steel.....20	Tradesman Closed Bags..... 40
RSL™ Aluminum21	Tradesman Open Bags..... 40
Slim Line.....22	Contractor Bag41
Hybrid.....23	Tradesman Rolling Bag.....41
Innersides 24	Parts & Accessories 42
Aluminum.....24	
Gear-Lock™ Aluminum25	No B.S. Warranty Info 43
Gear-Lock™ Steel.....25	

SITE-VAULT™ HEAVY-DUTY CHESTS

Tough is table stakes. Smart sets you apart.

Designed for optimal organization, premium access, weather resistance and security, our chests are built to work smarter and harder. Our patented locking system has a full-length steel lock console with three locking points and fluorescent reflective orange tape to indicate when the box is in the locked or unlocked position.



Reinforced Lid with Full-Length Bolster

Reduces damage from excess stacking weight and resists pry bar entry

Site-Vault™ Security System

The patented system has a full-length steel lock console with three locking points and fluorescent reflective orange tape that indicates chest is locked

EZ-Lock Arm

Securely locks lid open

Dual Built-In Lid Storage Bins

Cargo nets hold items like first aid kit, manuals, rain gear and safety items

Integrated Sidewall Cargo Bin

Convenient storage for small tools and parts

Lid Control Gas Spring

Eases lifting and prevents lid from slamming shut

Recessed Handles

Prevent pinched fingers and damage to the handle

EZ-Loader 4-Way Skid Bolsters

Allow fork lift loading from any side for quicker and easier transport



2-654990

2-654990

SITE-VAULT™ HEAVY DUTY CHESTS

- Site-Vault™ security system is a patented system with 3 locking points and a reflective orange lock indicator that shows when the box is locked
- Heavy-duty beveled edge lid eliminates sharp front lid corners and enhances lid strength
- Dual built-in lid storage with integrated cargo nets is perfect for gear and small tools
- EZ-Lock support arm secures and locks lid in open position for safe use
- Upgraded lock system now allows usage of padlock models Master #1, #5, #175 and American #50
- Integrated sidewall cargo bin provides convenient storage for small tools
- Ergonomic lifting handles are positioned inside deep recesses to prevent pinched knuckles and damage to handles
- Heavy-duty EZ-Loader 4-way skid bolsters allow fork lift loading from any side for quicker and easier transport
- Skid bolsters are compatible with casters (Part #1-320993, not included) for easy mobility
- Heavy-duty hinge is staked and welded to prevent the pin from being forced out for break in



Cat. No.	Length	Width	Height	Usable Cu. Ft.	App. Ship Wt.
2-651990	30 in	20 in	19.75 in	5 ft³	60 lb
2-652990	36 in	20 in	27.5 in	9 ft³	98 lb
2-653990	42 in	20 in	27.5 in	10.5 ft³	118 lb
2-654990	48 in	24 in	30.75 in	16.7 ft³	148 lb
2-656990	48 in	30 in	36.75 in	25.6 ft³	190 lb
2-655990	60 in	24 in	30.75 in	21 ft³	182 lb
2-658990	72 in	24 in	30.75 in	25.3 ft³	203 lb

SITE-VAULT™ HEAVY DUTY CHESTS WITH DRAWER



Cat. No.	Length	Width	Height	Usable Cu. Ft.	App. Ship Wt.
2D-656990	48 in	30 in	36.625 in	20 ft³	200 lb
2DL-656990	48 in	30 in	36.625 in	20 ft³	225 lb

SITE-VAULT™ HEAVY-DUTY CHEST REPLACEMENT PARTS



Item No.	Description	Shock	Lock Kit	Elbow
2-651990	30 in Site-Vault™ Heavy-Duty Chest	NO SHOCK	10319-165	10319-200
2-652990	36 in Site-Vault™ Heavy-Duty Chest	NO SHOCK	10319-165	10319-200
2-653990	42 in Site-Vault™ Heavy-Duty Chest	10319-201	10319-165	10319-200
2-654990	48 in Site-Vault™ Heavy-Duty Chest	10159-85	10319-165	10314-03
2-656990	48 in Site-Vault™ Heavy-Duty Chest	10159-90	10319-165	10314-03
2-655990	60 in Site-Vault™ Heavy-Duty Chest	10159-91	10319-165	10319-214
2-658990	72 in Site-Vault™ Heavy-Duty Chest	10159-90	10319-165	10314-03
2D-656990	48 in Site-Vault™ Heavy-Duty Chest w/ Drawer	10159-91	10319-165	10319-214
2DL-656990	48 in Site-Vault™ Heavy-Duty Chest w/ Drawer	10159-92	10319-165	10319-200

TRADESMAN STEEL CHESTS

- High-security design features enclosed dual lock system that resists saws, pry bars, and bolt cutters
- Grip-Rite™ lifting channel provides better grip on lid for easier and safer lid operation
- Rain-drain feature in padlock housing prevents water from collecting in box
- Ergonomic lifting handles are positioned inside deep recesses to prevent pinched knuckles and damage to handles
- EZ-Loader 4-way skid bolsters allow fork lift loading from any side for quicker and easier transport
- Skid bolsters are compatible with casters (Part #1-320993, not included) for easy mobility
- Heavy-duty hinge is staked and welded to prevent the pin from being forced out for break in
- Lid-control gas spring eases opening and closure of lid to prevent lid slamming



Cat. No.	Length	Width	Height	Usable Cu. Ft.	App. Ship Wt.
CJB635990	36 in	19.5 in	22 in	8.9 ft³	88 lb
CJB636990	42 in	20 in	22 in	10.7 ft³	101 lb
CJB637990	48 in	24 in	27.5 in	18.3 ft³	140.5 lb
CJB638990	60 in	24 in	27.5 in	22.9 ft³	155 lb

Tough gets the job done.
Smart gets the job done right.

TRADESMAN STEEL CHEST REPLACEMENT PARTS



Item No.	Description	Lock Kit	Elbow
CJB635990	36 in Tradesman Steel Chest	10318-410	10314-02
CJB636990	42 in Tradesman Steel Chest	10318-410	10314-04
CJB637990	48 in Tradesman Steel Chest	10318-410	10314-02
CJB638990	60 in Tradesman Steel Chest	10318-410	10314-04

CHESTS

HIGH-CAPACITY DROP-FRONT CHEST

- Site-Vault™ security system with fully welded, bolt-cutter proof housing
- Full-length steel lock console with two locking points
- 44" wide low incline loading ramp with 8° loading angle
- Grip-Rite™ lifting channel for easier opening
- Full-length A-frame lid bolster
- Staked and welded hinge
- 1" locking arm
- Power cord access hole
- Recessed handles
- Lid lowering assist shock absorber



Cat. No.	Length	Width	Height	Usable Cu. Ft.	App. Ship Wt.
1-657990	60 in	31 in	45 in	41.5 ft³	340 lb

SLOPE LID CHEST

- Site-Vault™ security system with bolt-cutter proof housing
- Full-length steel lock console with three locking points
- Fully welded padlock housing
- Lid support rod props up lid for a flat working surface
- Grip-Rite™ lifting channel for easier opening
- Full-length A-frame lid bolster
- 1" locking arms
- Staked and welded hinge
- Lift-N-Stow hinged shelf to store bulky items in the bottom
- Recessed handles



Cat. No.	Length	Width	Height	Usable Cu. Ft.	App. Ship Wt.
1-680990	60 in	30 in	39.5 in	32.7 ft³	243 lb

CHEST REPLACEMENT PARTS



Item No.	Description	Shock	Lock Kit	Elbow
1-680990	Slope Lid Chest	NO SHOCK	10318-705	10318-846 Right Hand Side, 10318-847 Left Hand Side
1-657990	High-Capacity Drop-Front Chest	10159-75	10318-705	10314-04

WELDER'S BOX

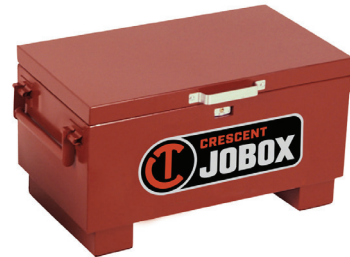
- Cut-out for supply hose
- Compact and portable
- Staked and welded hinges
- Welded corner gussets
- 10-gauge latching hasp
- Wide lifting handles
- Textured powder paint finish



Cat. No.	Length	Width	Height	Usable Cu. Ft.	App. Ship Wt.
650990D	30 in	16 in	12 in	3.3 ft ³	33 lb

EMBEDDED LOCK SMALL CHEST

- Bolt cutter-proof lock housing
- Compact and portable
- Staked and welded hinges
- Welded corner gussets
- 10-gauge latching hasp
- Heavy-duty lifting handles
- Bottom bolsters for lift and support



Cat. No.	Length	Width	Height	Usable Cu. Ft.	App. Ship Wt.
651990D	31 in	18 in	15.5 in	4 ft ³	70 lb

Tough gets the job done.
Smart gets the job done right.

SITE-VAULT™ PIANO BOXES

Tough gets the job done, smart gets the job done right.

With the perfect combination of storage of storage space, organization, and security, the world-renowned Crescent Piano Box solves real-world problems. Two storage bins on both side walls and the Lift-N-Stow™ Shelf give you room to store any item, while the Site-Vault™ security system ensures that your valuables remain safe and secure.



Built-In Lid Storage

Easy access for hanging harnesses

Top Shelf

Designed for 1,000 lb. capacity to hold chain hoists

Ergonomic Lifting Handles

Positioned inside deep recesses to prevent pinched knuckles and damage to handles

More Padlock Compatibility

Use Master #1, #5, #175, and American 50

Site-Vault™ Security System

The patented system has a full-length steel lock console with three locking points and fluorescent reflective orange tape that indicates chest is locked

Sidewall Storage Locker

Can be padlocked for personal items

Lift-N-Stow™ Shelf

Full-width shelf with 500 lb. capacity swings up to accommodate large items

Heavy-Duty EZ-Loader 4-Way Skid Bolsters

Compatible with casters and allow fork lift loading from any side



2-682990-01

SITE-VAULT™ HEAVY DUTY PIANO BOXES

- Site-Vault™ is a patented security system with 3 locking points and a reflective orange lock indicator that shows when the box is locked
- Heavy-duty beveled edge lid eliminates sharp front lid corners and enhances lid strength
- Built-in door storage with hooks and cargo nets for storing harnesses, jackets, etc
- Upgraded lock system now allows usage of padlock models Master #1, #5, #175 and American #50
- Integrated sidewall storage locker can be padlocked for personal items
- Ergonomic lifting handles are positioned inside deep recesses to prevent pinched knuckles and damage to handles
- Heavy-duty EZ-Loader 4-way skid bolsters allow forklift loading from any side
- Skid bolsters are compatible with casters (Part #1-320993, not included)
- High-strength top shelf is rated to hold 1,000 pounds
- Rigid 4" formed sidewalls resist wind-driven rain and pry bar break-in for long term durability



Cat. No.	Length	Width	Height	Usable Cu. Ft.	App. Ship Wt.
2-681990-01	47.9 in	31 in	51 in	39.1 ft ³	298 lb
2-688990-01	60 in	31 in	39 in	36.5 ft ³	279.000 lb
2-682990-01	60 in	31 in	51 in	48.9 ft ³	354.000 lb
2-683990-01	60 in	31 in	51 in	48.9 ft ³	380.000 lb
2-689990-01	74 in	31 in	51 in	60. ft ³	413.000 lb
2-684990-01	74 in	31 in	51 in	60.3 ft ³	437.500 lb
2-685990-01	74 in	35 in	64 in	87.4 ft ³	520.000 lb

SITE-VAULT™ HEAVY DUTY PIANO BOXES WITH DRAWER



Cat. No.	Length	Width	Height	Usable Cu. Ft.	App. Ship Wt.
2D-681990	48 in	31.15 in	56.78 in	44.45 ft ³	450 lb
2D-682990	60 in	30.75 in	56.78 in	20 ft ³	580 lb

Tough gets the job done.
Smart gets the job done right.

HEAVY DUTY PIANO BOX

- Two gas springs assist with opening and closing the door
- Ergonomic lifting handles are positioned inside deep recesses to prevent pinched knuckles and damage to handles
- Tall bottom bolsters for easily moving a loaded piano box with a forklift
- Rain-drain feature in padlock housing prevents water from collecting in box
- High-security design features enclosed dual lock system that resists saws, pry bars, and bolt cutters



Cat. No.	Length	Width	Height	Usable Cu. Ft.	App. Ship Wt.
640990	60 in	30.5 in	49.88 in	48 ft ³	308 lb

SITE-VAULT™ PIANO BOX REPLACEMENT PARTS



Item No.	Description	Shock	Lock Kit	Cable
2-681990-01	48 in Site-Vault™ Heavy-Duty Piano Box	10159-88	10319-165	10109-8
2-682990-01	60 in Site-Vault™ Heavy-Duty Piano Box	10159-88	10319-165	10109-8
2-683990-01	60 in Site-Vault™ Heavy-Duty Piano Box	10159-88	10319-165	10109-8
2-684990-01	74 in Site-Vault™ Heavy-Duty Piano Box	10159-87	10319-165	10109-8
2-685990-01	74 in Site-Vault™ Heavy-Duty Piano Box	10159-78	10319-165	10109-8
2-688990-01	60 in Site-Vault™ Heavy-Duty Piano Box	10159-88	10319-165	10109-8
2-689990-01	74 in Site-Vault™ Heavy-Duty Piano Box	10159-87	10319-165	10109-8
2D-681990	48 in Site-Vault™ Heavy-Duty Piano Box with Drawer	10159-88	10319-165	10109-8
2D-682990	60 in Site-Vault™ Heavy-Duty Piano Box with Drawer	10159-88	10319-165	10109-8

FIELD OFFICE

- Large lockable desktop can be raised to make a flat working surface
- Beveled sidewalls for enhanced weather resistance and security
- Steel pegboard
- 30 cubic foot storage locker
- Rain gutters
- Upper door safety bar support with locking pin
- Stainless steel door hinges resist rust
- EZ-Loader® skid bolsters
- One handle lock
- Storage area for plans and binders on side wall



Cat. No.	Length	Width	Height	Usable Cu. Ft.	App. Ship Wt.
1-674990	63 in	42 in	80 in	100 ft³	660 lb

MOBILE FIELD OFFICE

- Full size desk, easily handles size "E" prints
- 11 built-in bins for organization while on the job
- Removable upper shelf opens the rear wall to add a monitor
- Extreme mobility for convenience on the job; roll it (through 36" doors), telehandle it, or hoist it
- Perfect desk height for comfort while working
- Slide-out bottom shelf for easy access to items



Cat. No.	Length	Width	Height	Usable Cu. Ft.	App. Ship Wt.
1-510990	63 in	33 in	80 in	61 ft³	581 lb

TRADESMAN FIELD OFFICE

- Large lockable desktop can be raised to make a flat working surface
- Built-in sidewall bins
- Upper door safety bar support with locking pin
- Full 42" deep bottom shelf
- Full door weather stripping
- EZ-Loader® 4-way skid bolsters
- One handle lock
- Lid lowering assist shock absorber
- EZ-Loader® skid bolsters
- Formed-in reinforcements strengthen skid bolsters



Cat. No.	Length	Width	Height	Usable Cu. Ft.	App. Ship Wt.
1-669990	63 in	42 in	79 in	99.6 ft³	604 lb

Tough gets the job done.
Smart gets the job done right.

CRESCENT MESH CABINETS

You're the know, this is the how.

Our mesh cabinets provides convenient storage in a highly visible manner. The cabinets easily fit through standard, commercial doorways allowing tools kept inside to be brought through any jobsite or factory.



Solid Steel Cabinet Top & Bottom Shelf

Increases strength and prevents items from snagging or falling through

Commercial Duty 3-Point Lock

Secures doors at top, bottom and center

Rear Shelf Lip

Helps prevent items from falling backwards



Removable Shelves

Slide easily even when fully loaded up to 200 lbs.

Rugged 13 Gauge Steel Mesh

For maximum security and visibility

Flat Bottom Shelf

For easy loading and unloading



1-402990



MESH CABINETS

- Removable shelves can be adjusted to multiple positions for maximum storage flexibility
- Sliding shelves provide easy access even when loaded to the maximum capacity of 200 lbs
- Built-in door shelves provide convenient highly visible storage
- Solid top and bottom construction to prevent items from falling through mesh
- Flat bottom shelf with no lip allows easy loading and unloading of heavy items
- White shelving provides high visibility in the cabinet
- Rugged 3 point locking system and continuous door hinges provide long term durability
- Conveniently fits through a standard 3' commercial doorway
- Push handle and shelf provide convenient storage for a step ladder, shelf can hold up to 200 lbs



Cat. No.	Length	Width	Height	Usable Cu. Ft.	App. Ship Wt.
1-402990	42.5 in	33 in	51.25 in	40 ft ³	215 lb
1-401990	59.25 in	33 in	55 in	60.46 ft ³	328 lb
1-400990	75 in	33 in	55 in	76.96 ft ³	375 lb

MESH CABINET REPLACEMENT SHELVES



Item No.	Description	Shelf Part No.
1-402990	Removable White Shelf 42.5 in	14000033
1-401990	Removable White Shelf 59.25 in	14010033
1-400990	Removable White Shelf 75 in	14000033
1-403990	Removable White Shelf 75 in	14000033

Tough gets the job done.
Smart gets the job done right.

HEAVY-DUTY CABINETS

- Nearly 17 linear feet of door shelf storage
- Three 5/8" steel locking pins per door
- Welded corner gussets
- Three heavy-duty lock hooks per door
- EZ-Loader® skid bolsters
- Access holes for electrical cables
- Staked and welded hinge
- Stainless steel door hinges resist rust
- Hand or foot operated door latch release system
- Grip-Rite™ lifting channel



Cat. No.	Description	Length	Width	Height	Usable Cu. Ft.	App. Ship Wt.
1-698990	Two Doors	60.125 in	30.25 in	60.75 in	58.7 ft³	436 lb
1-694990	Two Doors	60.750 in	24.25 in	60.25 in	47.5 ft³	379 lb
1-697990	Two Doors, Open Side	60.125 in	24.25 in	60.75 in	47.5 ft³	366 lb
1-695990	Four Doors, Both Sides	60.125 in	32.25 in	60.75 in	63.7 ft³	523 lb

EXTRA HEAVY-DUTY BIN CABINET

- Over 40' of shelving built into doors for smaller items
- Heavy-duty galvanized movable bin dividers
- Dividers can be moved in 2" increments or removed to create various size bins
- Divider assembly required
- Center EZ-Loader® skid bolster
- Formed-in reinforcements strengthen skid bolsters
- 7-gauge, one-piece steel bolsters with holes to install optional casters
- Access holes for electrical cables
- Staked and welded hinges
- Hand or foot operated door latch release system



Cat. No.	Description	Length	Width	Height	Usable Cu. Ft.	App. Ship Wt.
1-693990	Two Doors	72 in	24 in	61 in	49 ft³	522 lb

CABINETS

ROLLING CLAM SHELL CABINET

- Eight 4" heavy-duty casters open and close cabinet
- Hinge stop prevents cabinet from fully opening and reduces tipping
- High center handles for opening, closing, and moving cabinet
- 10-gauge latching hasp
- Rugged 16-gauge steel construction
- Moveable top and bottom shelves
- Open storage closet for tall items
- Lockable storage locker inside cabinet
- Only key entry area of padlock is exposed



Cat. No.	Length	Width	Height	Usable Cu. Ft.	App. Ship Wt.
692990	62.25 in	30 in	63.5 in	58 ft³	472 lb

ROLLING WORK BENCHES

- Fully adjustable interiors for maximum storage flexibility
- Heavy-duty 18-gauge steel drawers with 75 lb. capacity
- Ball bearing glides on drawers
- 4 heavy-duty casters; 2 fixed and 2 locking swivel
- Staked and welded hinges
- Welded corner gussets



Cat. No.	Length	Width	Height	Usable Cu. Ft.	App. Ship Wt.
675990	43.375 in	26.875 in	38.5 in	21.7 ft³	267 lb
675996	43.375 in	26.875 in	40.5 in	21.7 ft³	280 lb
676990	43.375 in	26.875 in	38.5 in	21.7 ft³	294 lb
676996	43.375 in	26.875 in	40.5 in	21.7 ft³	307 lb
677990	49.375 in	26.875 in	40.625 in	24.6 ft³	264 lb
678990	49.375 in	26.875 in	40.625 in	24.6 ft³	342 lb

DRAWER CABINET

- Drawers fully extend for easy access
- Hand or foot operated door latch release system
- Site-Vault™ security system with fully welded padlock housing
- EZ-Loader® skid bolsters allow for forklift access from all sides
- Welded corner gussets
- Access holes for electrical cables
- 4.5" deep top shelf and three 3" deep shelves on each door
- Recessed handles
- 2.5" drawers: 75-lb. load capacity; 5.5" drawers: 125-lb. load capacity



Cat. No.	Length	Width	Height	Usable Cu. Ft.	App. Ship Wt.
1-679990	60	30 in	60.8125 in	58.7 ft³	610 lb

Tough gets the job done.
Smart gets the job done right.

REPLACEMENT PARTS FOR MODELS 675, 676, 677 & 678

- Replacement Parts for Models 675, 676, 677 & 678
- Powder paint

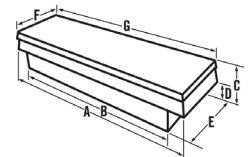


CROSSOVERS

Cat. No.	Description	Length	Width	Height	Works With	Product Weight
608990	Shelf	21.875 in	16.875 in	1.6 in	Models 677 & 678	8.000 lb
605990	2-1/2" Deep Drawer	21.875 in	16.875 in	2.5 in	Models 675 & 676	16.000 lb
609990	2-1/2" Deep Drawer	21.875 in	16.875 in	2.5 in	Models 677 & 678	17.000 lb
606990	4-1/2" Deep Drawer	21.875 in	16.875 in	4.5 in	Models 675 & 676	19.000 lb
610990	4-1/2" Deep Drawer	21.875 in	16.875 in	4.5 in	Models 677 & 678	18.100 lb
607990	5-1/2" Deep Drawer	21.875 in	16.875 in	5.5 in	Models 675 & 676	19.000 lb
611990	5-1/2" Deep Drawer	21.875 in	16.875 in	5.5 in	Models 677 & 678	21.000 lb
616990	10" Deep Drawer	21.875 in	16.875 in	10 in	Models 675 & 676	17.800 lb
617990	10" Deep Drawer	21.875 in	16.875 in	10 in	Models 677 & 678	19.300 lb
612990	Optional 2nd Push Handle	21.875 in	16.875 in	2.0 in	Models 675 & 676	2.000 lb

PUSH-BUTTON PREMIUM GEAR-LOCK™ SINGLE LID ALUMINUM CROSSOVERS

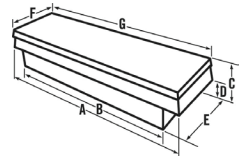
- Gear-Lock™ self adjusting dual rotary lock system always latches and closes for superior security
- Self-aligning latch pins pivot from side to side and lock the lid into Gear-Lock™ latch for premium security
- High-strength body and full-width lock console resist cargo damage and protect the locking mechanism
- RSL™ laminated rigid structural lid bolster for superior strength
- Tough Armor-Brite® powder paint finish has superior rust resistance
- Self rising lids with dual gas spring lid lifts for easy access
- 4-compartment storage tray assists with organization
- Built in storage bins on both ends for convenient small item storage
- Wide top box flanges provide extra strength and durability
- Lid locks from drivers side but can be opened from either side of vehicle



Cat. No.	Color	Size	A	B	C	D	E	F	G	Usable Cu. Ft.	App. Ship Wt.
PAC1580000	Bright	Fullsize	70.125 in	60.125 in	14.25 in	9 in	20.25 in	20.88	71 in	9.2 ft³	76.5 lb
PAC1580002	Black	Fullsize	70.125 in	60.125 in	14.25 in	9 in	20.25 in	20.875 in	71 in	9.2 ft³	76.5 lb
PAC1582000	Bright	Deep Fullsize	70.125 in	60.125 in	17.25 in	12 in	20.25 in	20.88	71 in	11.3 ft³	80.0 lb
PAC1582002	Black	Deep Fullsize	70.125 in	60.125 in	17.25 in	12 in	20.25 in	20.875 in	71 in	11.3 ft³	80.0 lb
PAC1585000	Bright	Super Deep Fullsize	70.125 in	60.125 in	19.875 in	14.625 in	20.25 in	21 in	71 in	13 ft³	83.0 lb
PAC1585002	Black	Super Deep Fullsize	70.125 in	60.125 in	19.875 in	14.625 in	20.25 in	21 in	71 in	13 ft³	83.0 lb
PAC1587000	Bright	Compact	60.125 in	50.125 in	11-1/4 in	6 in	20.25 in	20.875 in	61 in	6.1 ft³	69.0 lb

LOW-PROFILE GEAR-LOCK™ SINGLE LID ALUMINUM CROSSOVERS

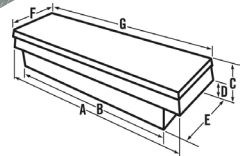
- Gear-Lock™ self adjusting dual rotary lock system always latches and closes for superior security
- Self-aligning latch pins pivot from side to side and lock the lid into Gear-Lock™ latch for premium security
- High-strength body and full-width lock console resist cargo damage and protect the locking mechanism
- RSL™ laminated rigid structural lid bolster for superior strength
- Tough Armor-Brite® powder paint finish has superior rust resistance
- Self rising lids with dual gas spring lid lifts for easy access
- 4-compartment storage tray assists with organization
- Built in storage bins on both ends for convenient small item storage
- Wide top box flanges provide extra strength and durability
- Lid locks from drivers side but can be opened from either side of vehicle



Cat. No.	Color	Size	A	B	C	D	E	F	G	Usable Cu. Ft.	App. Ship Wt.
PAC1357000	Bright	Fullsize	70 in	60.25 in	15.125 in	12.125 in	17.875 in	21 in	71.125 in	9.1 ft³	76.5 lb
PAC1357002	Black	Fullsize	70 in	60.25 in	15.125 in	12.125 in	17.875 in	21 in	71.125 in	9.1 ft³	76.5 lb

MID-LID GEAR-LOCK™ PUSH BUTTON ALUMINUM CROSSOVERS

- Gear-Lock™ self adjusting dual rotary lock system always latches and closes for superior security
- Self-aligning latch pins pivot from side to side and lock the lid into Gear-Lock™ latch for premium security
- High-strength body and full-width lock console resist cargo damage and protect the locking mechanism
- RSL™ laminated rigid structural lid bolster for superior strength
- Tough Armor-Brite® powder paint finish has superior rust resistance
- Self rising lids with dual gas spring lid lifts for easy access
- 4-compartment storage tray assists with organization
- Built in storage bins on both ends for convenient small item storage
- Wide top box flanges provide extra strength and durability
- Lid locks from drivers side but can be opened from either side of vehicle

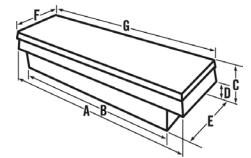


Cat. No.	Color	Size	A	B	C	D	E	F	G	Usable Cu. Ft.	App. Ship Wt.
PAC1596000	Bright	Fullsize	70.125 in	60.125 in	14.25 in	9 in	20.25 in	20.875 in	71 in	9.2 ft³	62.5 lb
PAC1596002	Black	Fullsize	70.125 in	60.125 in	14.25 in	9 in	20.25 in	20.875 in	71 in	9.2 ft³	62.5 lb
PAC1598000	Bright	Fullsize	70.125 in	60.125 in	14.25 in	9 in	20.25 in	21 in	71.875 in	9.2 ft³	62.5 lb

Tough gets the job done.
Smart gets the job done right.

GEAR-LOCK™ ALUMINUM SINGLE LID DEEP SUPER-DUTY & FULLSIZE DEEP CROSSOVER

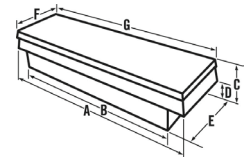
- Gear-Lock™ end-mounted push button locks ratchet lid tightly closed for superior security
- Self-aligning latch pins pivot from side to side and lock the lid into Gear-Lock™ latch for premium security
- High-strength body and full-width lock console resist cargo damage and protect the locking mechanism
- RSL™ laminated rigid structural lid bolster for superior strength
- Tough Armor-Brite® powder paint finish has superior rust resistance
- Self rising lids with dual gas spring lid lifts for easy access
- 4-compartment storage tray assists with organization
- Built in storage bins on both ends for convenient small item storage
- Wide top box flanges provide extra strength and durability



Cat. No.	Color	Size	A	B	C	D	E	F	G	Usable Cu. Ft.	App. Ship Wt.
1701000	Bright	Deep Super Duty & Fullsize Deep	71.125 in	58.75 in	18 in	12 in	20.25 in	21 in	72.125 in	11.9 ft³	77.0 lb

GEAR-LOCK™ PADDLE HANDLE SINGLE LID CROSSOVERS

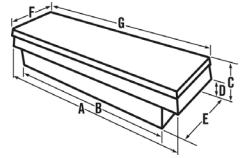
- RSL™ laminated rigid structural lid bolster for superior strength
- Self-aligning hoop lid strikers lock the lid down tight for improved security
- High-strength body design resists cargo damage and protects the locking mechanism
- Gear-Lock™ latches ratchet lid tightly closed for superior security
- Wide stainless steel paddle handles resist corrosion
- Self rising lids with dual gas spring lid lifts for easy access
- Small parts storage tray for organization
- Built in storage bins on both ends for convenient small item storage
- Wide top box flanges provide extra strength and durability
- Lid locks from drivers side but can be opened from either side of vehicle



Cat. No.	Color	Size	A	B	C	D	E	F	G	Usable Cu. Ft.	App. Ship Wt.
1-351000	Bright	Full Size Low Profile	69 in	59 in	14.25 in	12.125 in	20.25 in	21 in	70 in	9 ft³	56.0 lb
1-351002	Black	Full Size Low Profile	69 in	59 in	14.25 in	12.125 in	20.25 in	21 in	70 in	9 ft³	56.0 lb
1-232000	Bright	Full Size	69 in	59 in	14.25 in	9 in	20.25 in	21 in	70 in	9.2 ft³	50.5 lb
1-232002	Black	Full Size	69 in	59 in	14.25 in	9 in	20.25 in	21 in	70 in	9.2 ft³	50.5 lb
1-238000	Bright	Full Size Mid-Lid	69 in	59 in	14.25 in	9 in	20.25 in	21 in	70 in	9.2 ft³	52.5 lb

GEAR-LOCK™ PUSH BUTTON SINGLE LID STEEL CROSSOVERS

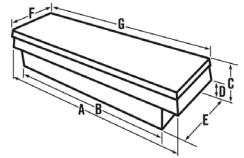
- Gear-Lock™ self adjusting dual rotary lock system always latches and closes for superior security
- Self-aligning latch pins pivot from side to side and lock the lid into Gear-Lock™ latch for premium security
- High-strength, self-rising lids will resist attempted break-ins better than other steel lids
- High-strength body design resists cargo damage and protects the locking mechanism
- End-mounted push buttons provide easy access
- Heavy-duty guards protect the gas springs and extend long term durability
- Built-in storage bins on both ends and 4-compartment sliding tray for small item storage
- Tough Armor-Brite® powder paint finish has superior rust resistance



Cat. No.	Color	Size	A	B	C	D	E	F	G	Usable Cu. Ft.	App. Ship Wt.
PSC1458000	White	Compact	60.125 in	50.125 in	11.25 in	6 in	20.25 in	20.875 in	61 in	6.1 ft³	77.0 lb
PSC1455000	White	Fullsize	70.125 in	60.125 in	14.25 in	9 in	20.25 in	20.875 in	71 in	9.2 ft³	94.0 lb
PSC1456000	White	Extra-Wide Deep	70.125 in	60.125 in	17.25 in	12 in	20.25 in	20.875 in	71 in	11.3 ft³	101.0 lb

GULL WING GEAR-LOCK™ PUSH BUTTON STEEL CROSSOVERS

- Gear-Lock™ self adjusting dual rotary lock system always latches and closes for superior security
- Self-aligning latch pins pivot from side to side and lock the lid into Gear-Lock™ latch for premium security
- High-strength, self-rising lids will resist attempted break-ins better than other steel lids
- High-strength body design resists cargo damage and protects the locking mechanism
- End-mounted push buttons provide easy access
- Heavy-duty guards protect the gas springs and extend long term durability
- Built-in storage bins on both ends and 4-compartment sliding tray for small item storage

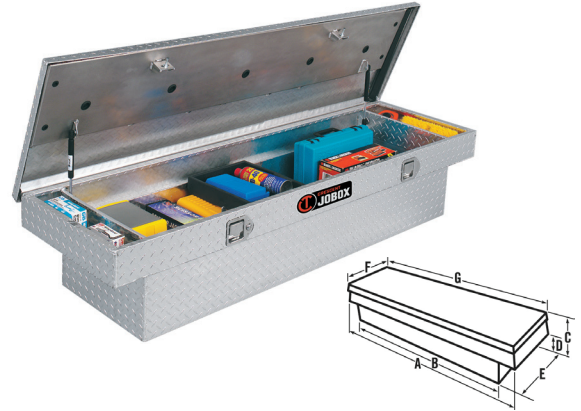


Cat. No.	Color	Size	A	B	C	D	E	F	G	Usable Cu. Ft.	App. Ship Wt.
PSC1460000	White	Fullsize	70.125 in	60.125 in	14.25 in	9 in	20.25 in	20.875 in	71 in	9.2 ft³	85.0 lb
PSC1461000	White	Deep Fullsize	70.125 in	60.125 in	17.25 in	12 in	20.25 in	20.875 in	71 in	11.3 ft³	93.0 lb

Tough gets the job done.
Smart gets the job done right.

RSL™ SINGLE LID PADDLE HANDLE ALUMINUM CROSSOVERS

- Lid reinforced with RSL™ rigid structural lid bolster for superior strength
- Adjustable lid strikers keep the lid locked down tight for improved security
- High-strength body design resists cargo damage and protects the locking mechanism
- Leak proof stainless steel paddle handles prevent moisture from entering
- Self rising lids with dual gas spring lid lifts for easy access
- Small parts storage tray for organization
- Built in storage bins on both ends for convenient small item storage
- Lid locks from drivers side but can be opened from either side of vehicle

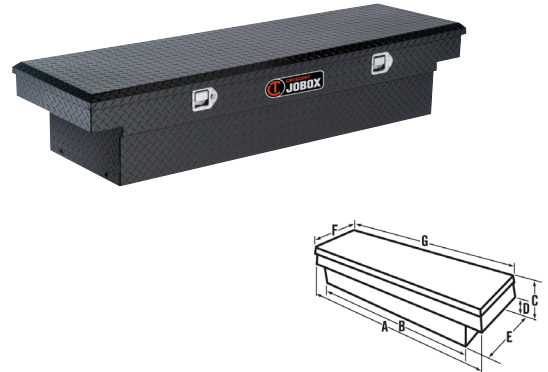


CROSSOVERS

Cat. No.	Color	Size	A	B	C	D	E	F	G	Usable Cu. Ft.	App. Ship Wt.
1-304000	Bright	Mid-Size	62.75 in	50.5 in	14.25 in	9 in	17 in	20.25 in	63.5 in	7.9 ft³	36.0 lb
1-304002	Black	Mid-Size	62.75 in	50.5 in	14.25 in	9 in	17 in	20.25 in	63.5 in	7.9 ft³	36.0 lb
1-300000	Bright	Fullsize	69.125 in	59.125 in	14.25 in	9 in	17 in	20.25 in	70 in	9.3 ft³	36.0 lb
1-300002	Black	Fullsize	69.125 in	59.125 in	14.25 in	9 in	17 in	20.25 in	70 in	9.3 ft³	36.0 lb
1-301000	Bright	Deep Fullsize	69.125 in	59.125 in	17.25 in	12 in	17 in	20.25 in	70 in	11 ft³	45.5 lb
1-301002	Black	Deep Fullsize	69.125 in	59.125 in	17.25 in	12 in	17 in	20.25 in	70 in	11 ft³	45.5 lb

LOW-PROFILE, RSL™ SINGLE LID PADDLE HANDLE ALUMINUM CROSSOVERS

- Lid reinforced with RSL™ rigid structural lid bolster for superior strength
- Adjustable lid strikers keep the lid locked down tight for improved security
- High-strength body design resists cargo damage and protects the locking mechanism
- Leak proof stainless steel paddle handles prevent moisture from entering
- Self rising lids with dual gas spring lid lifts for easy access
- Small parts storage tray for organization
- Built in storage bins on both ends for convenient small item storage
- Lid locks from drivers side but can be opened from either side of vehicle



Cat. No.	Color	Size	A	B	C	D	E	F	G	Usable Cu. Ft.	App. Ship Wt.
1-310000	Bright	Mid-Size	62.75 in	50.5 in	14.25 in	11.812 in	17 in	20.25 in	63.5 in	7 ft³	36.0 lb
1-302000	Bright	Fullsize	69.125 in	59.125 in	14.25 in	11.812 in	17 in	20.25 in	70 in	8.8 ft³	37.0 lb
1-302002	Black	Fullsize	69.125 in	59.125 in	14.25 in	11.812 in	17 in	20.25 in	70 in	8.8 ft³	37.0 lb

MID-LID RSL™ ALUMINUM CROSSOVERS

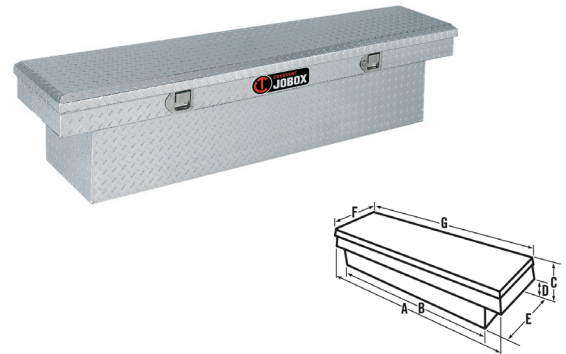
- Lid reinforced with RSL™ rigid structural lid bolster for superior strength
- Adjustable lid strikers keep the lid locked down tight for improved security
- High-strength body design resists cargo damage and protects the locking mechanism
- Leak proof stainless steel paddle handles prevent moisture from entering
- Self rising lids with dual gas spring lid lifts for easy access
- Small parts storage tray for organization
- Built in storage bins on both ends for convenient small item storage
- Lid locks from drivers side but can be opened from either side of vehicle



Cat. No.	Color	Size	A	B	C	D	E	F	G	Usable Cu. Ft.	App. Ship Wt.
1-306000	Bright	Fullsize	69.125 in	59.125 in	14.25 in	9 in	17 in	20.25 in	70 in	9.3 ft³	37.0 lb
1-306002	Black	Fullsize	69.125 in	59.125 in	14.25 in	9 in	17 in	20.25 in	70 in	9.3 ft³	37.0 lb

SLIMLINE SINGLE LID ALUMINUM CROSSOVERS

- Lid reinforced with RSL™ rigid structural lid bolster for superior strength
- Adjustable lid strikers keep the lid locked down tight for improved security
- High-strength body design resists cargo damage and protects locking mechanism
- Leak proof stainless steel paddle handles prevent moisture from entering
- Self rising lids with dual gas spring lid lifts for easy access
- Small parts storage tray for organization
- Built in storage bins on both ends for convenient small item storage
- Lid locks from drivers side but can be opened from either side of vehicle

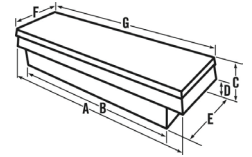


Cat. No.	Color	Size	A	B	C	D	E	F	G	Usable Cu. Ft.	App. Ship Wt.
1-311000	Bright	Fullsize	69.125 in	59-1/8 in	16 in	10.75 in	10.375 in	13.5 in	70 in	6.5 ft³	33.5 lb
1-311002	Black	Fullsize	69.125 in	59-1/8 in	16 in	10.75 in	10.375 in	13.5 in	70 in	6.5 ft³	33.5 lb

Tough gets the job done.
Smart gets the job done right.

HYBRID SINGLE LID CROSSOVER

- Durable steel box construction with durable powdercoat finish and non-rusting aluminum treadplate lid
- High-strength body design resists cargo damage and protects locking mechanism
- Adjustable lid strikers keep the lid locked down tight for improved security
- Heavy-duty gas springs for easy access
- Leak proof stainless steel paddle handles prevent moisture from entering
- Weathertight seal forms from compressed foam gasket



CROSSOVERS

Cat. No.	Color	Size	A	B	C	D	E	F	G	Usable Cu. Ft.	App. Ship Wt.
DHC1450000	Black	Fullsize	70.1875 in	60 in	13.72 in	11.07 in	20.0625 in	20.843 in	71.062 in	10.3 ft ³	56 lb

CROSSOVER REPLACEMENT SHOCKS



Cat. No.	Description	Shock
1-304000	RSL™ Single Lid Paddle Handle Aluminum Crossover	10159-49
1-304002	RSL™ Single Lid Paddle Handle Aluminum Crossover	10159-49
1-300000	RSL™ Single Lid Paddle Handle Aluminum Crossover	10159-68
1-300002	RSL™ Single Lid Paddle Handle Aluminum Crossover	10159-68
1-301000	RSL™ Single Lid Paddle Handle Aluminum Crossover	10159-68
1-301002	RSL™ Single Lid Paddle Handle Aluminum Crossover	10159-68
1-306000	Mid-Lid RSL™ Aluminum Crossover	10159-70
1-306002	Mid-Lid RSL™ Aluminum Crossover	10159-70
1-310000	Low-Profile, RSL™ Single Lid Paddle Handle Aluminum Crossover	10159-49
1-310002	Low-Profile, RSL™ Single Lid Paddle Handle Aluminum Crossover	10159-49
1-302000	Low-Profile, RSL™ Single Lid Paddle Handle Aluminum Crossover	10159-68
1-302002	Low-Profile, RSL™ Single Lid Paddle Handle Aluminum Crossover	10159-68
1-311000	Slimline Single Lid Aluminum Crossover	10159-49
1-311002	Slimline Single Lid Aluminum Crossover	10159-49
1-351000	Gear-Lock™ Paddle Handle Single Lid Crossover	10159-68
1-351002	Gear-Lock™ Paddle Handle Single Lid Crossover	10159-68
1-232000	Gear-Lock™ Paddle Handle Single Lid Crossover	10159-68
1-232002	Gear-Lock™ Paddle Handle Single Lid Crossover	10159-68
1-238000	Gear-Lock™ Paddle Handle Single Lid Crossover	10159-70
1-238002	Gear-Lock™ Paddle Handle Single Lid Crossover	10159-70
DHC1450000	Hybrid Single Lid Crossover	10159-01
PAC1357000	Low-Profile Push Button Gear-Lock™ Single Lid Aluminum Crossover	10159-56
PAC1357002	Low-Profile Push Button Gear-Lock™ Single Lid Aluminum Crossover	10159-56
PAC1580000	Push-Button Premium Gear-Lock™ Single Lid Aluminum Crossover	10159-56
PAC1580002	Push-Button Premium Gear-Lock™ Single Lid Aluminum Crossover	10159-56

[Continued on next page]

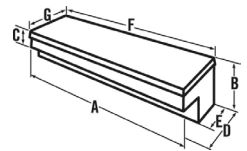
CROSSOVER REPLACEMENT SHOCKS *(Continued on next page)*

Cat. No.	Description	Shock
PAC1582000	Push-Button Premium Gear-Lock™ Single Lid Aluminum Crossover	10159-56
PAC1582002	Push-Button Premium Gear-Lock™ Single Lid Aluminum Crossover	10159-56
PAC1585000	Push-Button Premium Gear-Lock™ Single Lid Aluminum Crossover	10159-56
PAC1585002	Push-Button Premium Gear-Lock™ Single Lid Aluminum Crossover	10159-56
PAC1596000	Mid-Lid Gear-Lock™ Push Button Aluminum Crossover	10159-70
PAC1596002	Mid-Lid Gear-Lock™ Push Button Aluminum Crossover	10159-70
1701000	Limited Edition Premium Push Button Gear-Lock™ Truck Boxes	10159-23
PSC1460000	Gull Wing Gear-Lock™ Push Button Steel Crossover	10064
PSC1460002	Gull Wing Gear-Lock™ Push Button Steel Crossover	10064
PSC1458000	Gear-Lock™ Push Button Single Lid Steel Crossover	10159-55
PSC1458002	Gear-Lock™ Push Button Single Lid Steel Crossover	10159-55
PSC1455000	Gear-Lock™ Push Button Single Lid Steel Crossover	10159-24
PSC1455002	Gear-Lock™ Push Button Single Lid Steel Crossover	10159-24
PSC1456000	Gear-Lock™ Push Button Single Lid Steel Crossover	10159-24
PSC1456002	Gear-Lock™ Push Button Single Lid Steel Crossover	10159-24
PSC1457000	Gear-Lock™ Push Button Single Lid Steel Crossover	10159-26
PSC1457002	Gear-Lock™ Push Button Single Lid Steel Crossover	10159-26

INNERSIDES

ALUMINUM INNERSIDES

- Lid reinforced with bolster for superior strength
- Adjustable lid strikers keep the lid locked down tight for improved security
- High-strength body design resists cargo damage and protects the locking mechanism
- Leak proof stainless steel paddle handles prevent moisture from entering
- Self rising lids with gas spring lid lifts for easy access
- Includes mounting kit and supporting legs with hardware

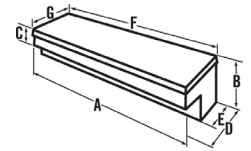


Cat. No.	Color	Size	A	B	C	D	E	F	G	Usable Cu. Ft.	App. Ship Wt.
1-312000	Bright	49" Long Lid	47.75 in	11 in	5.375 in	12.25 in	8 in	48.625 in	13 in	2.7 ft³	24.5 lb
1-312002	Black	49" Long Lid	47.75 in	11 in	5.375 in	12.25 in	8 in	48.625 in	13 in	2.7 ft³	24.5 lb
1-313000	Bright	59" Long Lid	57.75 in	11 in	5.375 in	12.25 in	8 in	58.625 in	13 in	3.2 ft³	30.0 lb
1-313002	Black	59" Long Lid	57.75 in	11 in	5.375 in	12.25 in	8 in	58.625 in	13 in	3.2 ft³	30.0 lb

Tough gets the job done.
Smart gets the job done right.

GEAR-LOCK™ ALUMINUM INNERSIDES

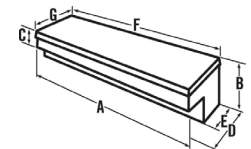
- Gear-Lock™ self adjusting dual rotary lock system always latches and closes for superior security
- Self-aligning latch pins pivot from side to side and lock the lid into Gear-Lock™ latch for premium security
- High-strength RSL™ laminated 3-layer rigid structural lid is the strongest, most rigid aluminum lid we've tested
- Reinforced high-strength body and full-width lock console resists cargo damage and protects the lock system
- Heavy-duty guards protect the vertical-action gas spring lid lifts and help ensure long-term durability
- Built-in full-length storage compartment for small tools and parts
- Includes mounting kit and supporting legs with hardware



Cat. No.	Color	Size	A	B	C	D	E	F	G	Usable Cu. Ft.	App. Ship Wt.
PAN1441000	Bright	48 1/2" Long Lid	47.75 in	11 in	5.375 in	12.125 in	7.875 in	48.5 in	13 in	2.7 ft³	28.5 lb
PAN1441002	Black	48 1/2" Long Lid	47.75 in	11 in	5.375 in	12.125 in	7.875 in	48.5 in	13 in	2.7 ft³	28.5 lb
PAN1442000	Bright	58 1/2" Long Lid	57.75 in	11 in	5.375 in	12.125 in	7.875 in	58.5 in	13 in	3.2 ft³	32 lb
PAN1442002	Black	58 1/2" Long Lid	57.75 in	11 in	5.375 in	12.125 in	7.875 in	58.5 in	13 in	3.2 ft³	32 lb

GEAR-LOCK™ STEEL INNERSIDES

- Gear-Lock™ push button lock ratchets lid to box for superior security
- Self-aligning latch pins pivot from side to side and lock the lid into Gear-Lock™ latch for premium security
- High-strength body design resists cargo damage and protects locking mechanism
- Self rising lids with gas spring lid lifts for easy access
- Tough Armor-Brite® powder paint finish has superior rust resistance
- RSL™ laminated rigid structural lid bolster for superior strength
- Built-in front storage for convenient small item storage
- Includes mounting kit and supporting legs with hardware



Cat. No.	Color	Size	A	B	C	D	E	F	G	Usable Cu. Ft.	App. Ship Wt.
PSN1451000	White	47 1/2" Long Lid	47.75 in	11.125 in	5.375 in	12.25 in	8.25 in	47.5 in	12 in	2.6 ft³	48.5 lb
PSN1451002	Black	47 1/2" Long Lid	47.75 in	11.125 in	5.375 in	12.25 in	8.25 in	47.5 in	12 in	2.6 ft³	48.5 lb
PSN1452000	White	58 1/2" Long Lid	57.75 in	11.125 in	5.375 in	12.25 in	8.25 in	58.5 in	12 in	3.2 ft³	60.0 lb
PSN1452002	Black	58 1/2" Long Lid	57.75 in	11.125 in	5.375 in	12.25 in	8.25 in	58.5 in	12 in	3.2 ft³	60.0 lb

INNERSIDES

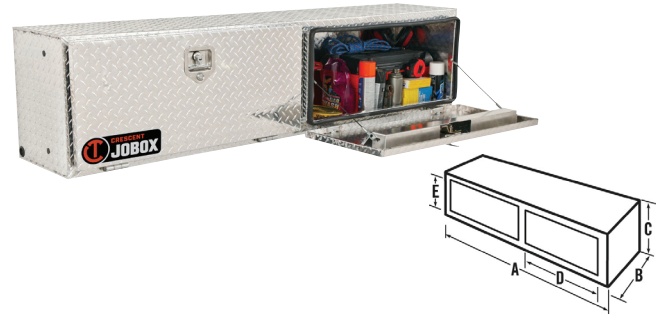
INNERSIDES REPLACEMENT SHOCKS



Item No.	Description	Shock
1-312000	Aluminum Innersides	10159-68
1-312002	Aluminum Innersides	10159-68
1-313000	Aluminum Innersides	10159-68
1-313002	Aluminum Innersides	10159-68
PAN1441000	Gear-Lock™ Aluminum Innersides	10159-68
PAN1441002	Gear-Lock™ Aluminum Innersides	10159-68
PAN1442000	Gear-Lock™ Aluminum Innersides	10159-68
PAN1442002	Gear-Lock™ Aluminum Innersides	10159-68
PSN1451000	47 1/2 in Long Lid	10159-15
PSN1451002	47 1/2 in Long Lid	10159-15
PSN1452000	58 1/2 in Long Lid	10159-15
PSN1452002	58 1/2 in Long Lid	10159-15

ALUMINUM TOPSIDES

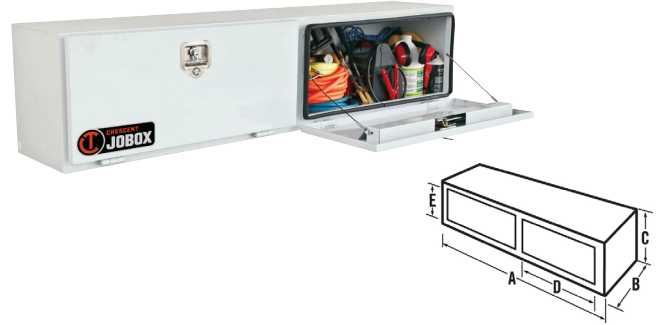
- Reinforced rain gutter doors seal around topside opening to prevent leakage or moisture
- Heavy-duty hinges provide high strength security and longevity
- Stainless steel rotating t-handle pulls the door tight against the seal
- Quick release coated aircraft cables allow door to drop down 180 degrees for full accessibility
- Automotive bulb weather stripping seals door 360°
- Includes mounting kit and supporting legs with hardware



Cat. No.	Color	Size	A	B	C	D	E	Usable Cu. Ft.	App. Ship Wt.
570000	Bright	44" Long	44 in	15 in	17 in	40 in	12.75 in	5.7 ft ³	32.0 lb
572000	Bright	72" Long	72 in	15 in	17 in	40 in	12.75 in	9.4 ft ³	55.0 lb
572002D	Black	72" Long	72 in	15 in	17 in	40 in	12.75 in	9.4 ft ³	55.0 lb
573000	Bright	88" Long	88 in	15 in	17 in	40 in	12.75 in	11.5 ft ³	58.0 lb
573002	Black	88" Long	88 in	15 in	17 in	40 in	12.75 in	11.5 ft ³	58.0 lb
574000D	Bright	96" Long	96 in	15 in	17 in	40 in	12.75 in	12.5 ft ³	63.0 lb
574002D	Black	96" Long	96 in	15 in	17 in	40 in	12.75 in	12.5 ft ³	63.0 lb

STEEL TOPSIDES

- Reinforced rain gutter doors seal around topside opening to prevent leakage or moisture
- Heavy-duty hinges provide high strength security and longevity
- Stainless steel rotating t-handle pulls the door tight against the seal
- Quick release coated aircraft cables allow door to drop down 180 degrees for full accessibility
- Automotive bulb weather stripping seals door 360°
- Includes mounting kit and supporting legs with hardware
- Tough Armor-Brite® powder paint finish has superior rust resistance



Cat. No.	Color	Size	A	B	C	D	E	Usable Cu. Ft.	App. Ship Wt.
577000	White	72" Long	72 in	15 in	17 in	40 in	12.75 in	9.4 ft ³	118.0 lb
578000	White	88" Long	88 in	15 in	17 in	40 in	12.75 in	11.5 ft ³	140.0 lb
579000	White	96" Long	96 in	15 in	17 in	40 in	12.75 in	12.5 ft ³	146.0 lb

STEEL UNDERBED BOXES

- Industrial grade steel hinges and drop down door for easy loading and unloading and the high strength door cables create versatility and strength
- Bulb-shaped automotive weather stripping and extended rain gutter help keep out the weather
- Quick release keyway connectors allow the door to drop down when cables are detached
- Rugged, one-piece lock housing helps protect the lock components and provides extra strength to the door
- Rotating t-handle with a reinforced cam lock, three-point locking system and one-piece lock housing provide greater security



Cat. No.	Color	Length	Width	Height	Inside Length	Inside Width	Inside Height	Usable Cu. Ft.	App. Ship Wt.
7924160	White	24 in	16 in	14 in	24 in	15.875 in	13.875 in	3.06 ft ³	55 lb
7924162	Black	24 in	16 in	14 in	24 in	15.875 in	13.875 in	3.06 ft ³	55 lb
790980	White	24 in	18 in	18 in	24 in	16.75 in	17.875 in	4.16 ft ³	68 lb
790982	Black	24 in	18 in	18 in	24 in	16.75 in	17.875 in	4.16 ft ³	68 lb
7924240	White	24 in	24 in	24 in	24 in	24 in	23.875 in	7.96 ft ³	94 lb
7924242	Black	24 in	24 in	24 in	24 in	24 in	23.875 in	7.96 ft ³	94 lb
791980	White	30 in	18 in	18 in	30 in	16.75 in	17.875 in	5.20 ft ³	80 lb
791982	Black	30 in	18 in	18 in	30 in	16.75 in	17.875 in	5.20 ft ³	80 lb
7930240	White	30 in	24 in	24 in	30 in	24 in	23.875 in	9.95 ft ³	110 lb
7930242	Black	30 in	24 in	24 in	30 in	24 in	23.875 in	9.95 ft ³	110 lb
7936140	White	36 in	12 in	14 in	36 in	11.375 in	13.875 in	3.43 ft ³	68 lb
7936142	Black	36 in	12 in	14 in	36 in	11.375 in	13.875 in	3.43 ft ³	68 lb
7936160	White	36 in	16 in	14 in	36 in	13.85 in	13.85 in	4.0 ft ³	76 lb
7936162	Black	36 in	16 in	14 in	36 in	13.85 in	13.85 in	4.0 ft ³	76 lb
792980	White	36 in	18 in	18 in	36 in	16.75 in	17.875 in	6.24 ft ³	92 lb
792982	Black	36 in	18 in	18 in	36 in	16.75 in	17.875 in	6.24 ft ³	92 lb

(Continued on next page)

STEEL UNDERBED BOXES *(Continued from previous page)*

Cat. No.	Color	Length	Width	Height	Inside Length	Inside Width	Inside Height	Usable Cu. Ft.	App. Ship Wt.
7936240	White	36 in	24 in	24 in	36 in	24 in	23.875 in	11.94 ft ³	126 lb
7936242	Black	36 in	24 in	24 in	36 in	24 in	23.875 in	11.94 ft ³	126 lb
793980	White	48 in	18 in	18 in	48 in	16.75 in	17.875 in	8.32 ft ³	117 lb
793982	Black	48 in	18 in	18 in	48 in	16.75 in	17.875 in	8.32 ft ³	117 lb
7948240	White	48 in	24 in	24 in	48 in	24 in	23.875 in	15.92 ft ³	158 lb
7948242	Black	48 in	24 in	24 in	48 in	24 in	23.875 in	15.92 ft ³	158 lb
794980	White	60 in	18 in	18 in	60 in	16.75 in	17.875 in	10.40 ft ³	142 lb
794982	Black	60 in	18 in	18 in	60 in	16.75 in	17.875 in	10.40 ft ³	142 lb
7960240	White	60 in	24 in	24 in	60 in	22.82 in	23.85 in	18.90 ft ³	190 lb
7960242	Black	60 in	24 in	24 in	60 in	22.82 in	23.85 in	18.90 ft ³	190 lb
7972180	White	72 in	18 in	18 in	72 in	16.82 in	17.85 in	12.51 ft ³	168 lb
7972182	Black	72 in	18 in	18 in	72 in	16.82 in	17.85 in	12.51 ft ³	168 lb

MOUNTING BRACKETS

- Heavy-duty 2" C-channel brackets for mounting underbed boxes
- Brackets have multiple mounting holes for easy installation
- Sold in pairs



Cat. No.	Length	Width	Height	App. Ship Wt.
228000	18 in	2 in	18 in	15.0 lb
229000	24 in	2 in	24 in	33.5 lb

STEEL UNDERBED BOX REPLACEMENT CABLES



Item No.	Length	Width	Height	Cable
790980	24 in	18 in	18 in	10109-13
790982	24 in	18 in	18 in	10109-13
7924160	24 in	16 in	14 in	10159-13
7924162	24 in	16 in	14 in	10159-13
7924240	24 in	24 in	24 in	10109-15
7924242	24 in	24 in	24 in	10109-15
791980	30 in	18 in	18 in	10109-13
791982	30 in	18 in	18 in	10109-13
7930240	30 in	24 in	24 in	10109-15

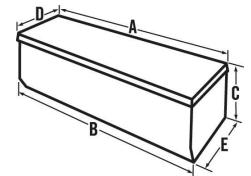
Tough gets the job done.
Smart gets the job done right.

CHESTS

Item No.	Length	Width	Height	Cable
7930242	30 in	24 in	24 in	10109-15
792980	36 in	18 in	18 in	10109-13
792982	36 in	18 in	18 in	10109-13
7936140	36 in	12 in	14 in	10109-19
7936142	36 in	12 in	14 in	10109-19
7936160	36 in	16 in	14 in	10109-14
7936162	36 in	16 in	14 in	10109-14
7936240	36 in	24 in	24 in	10109-15
7936242	36 in	24 in	24 in	10109-15
793980	48 in	18 in	18 in	10109-13
793982	48 in	18 in	18 in	10109-13
7948240	48 in	24 in	24 in	10109-15
7948242	48 in	24 in	24 in	10109-15
794980	60 in	18 in	18 in	10109-13
794982	60 in	18 in	18 in	10109-13
7960240	60 in	24 in	24 in	10109-15
7960242	60 in	24 in	24 in	10109-15
7972180	72 in	18 in	18 in	10109-13
7972182	72 in	18 in	18 in	10109-13

GEAR-LOCK™ PADDLE HANDLE ALUMINUM CHESTS

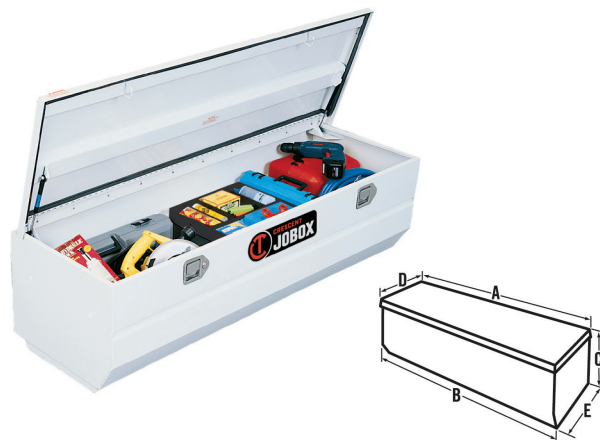
- Gear-Lock™ paddle handle lock ratchets lid to box for superior security
- Self aligning hoop strikers pivot from side-to-side and lock the lid for premium security
- RSL™ laminated rigid structural lid bolster for superior strength
- Self rising lids with dual gas spring lid lifts for easy access
- Full weatherstripping helps seal out moisture and dust
- Wide top box flanges provide extra strength and durability
- Angled edges on front and side walls provide best fit, even when installed with a bed liner



Cat. No.	Color	Size	A	B	C	D	E	Usable Cu. Ft.	App. Ship Wt.
1-350000	Bright	Full Size Long	61 in	61.25 in	19.25 in	20.5 in	20 in	12 ft ³	53.0 lb
1-350002	Black	Full Size Long	61 in	61.25 in	19.25 in	20.5 in	20 in	12 ft ³	53.0 lb

GEAR-LOCK™ ALUMINUM CHESTS

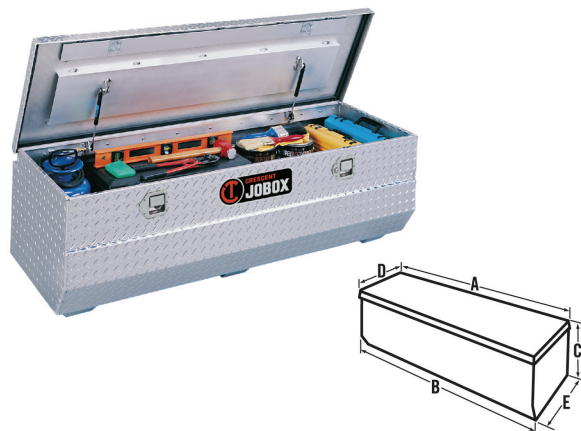
- Gear-Lock™ self adjusting dual rotary lock system always latches and closes for superior security
- Self-aligning latch pins pivot from side to side and lock the lid into Gear-Lock™ latch for premium security
- RSL™ laminated rigid structural lid bolster for superior strength
- High-strength body and full-width lock console resist cargo damage and protect the locking mechanism
- Self rising lids with dual gas spring lid lifts for easy access
- Leak proof stainless steel paddle handles prevent moisture from entering
- Universal fit design features a tapered bottom section on the ends and front wall



Cat. No.	Color	Size	A	B	C	D	E	Usable Cu. Ft.	App. Ship Wt.
PAH1420000	Bright	SWB Fullsize	61 in	60.125 in	19.375 in	20.625 in	18.75 in	12.1 ft ³	53.0 lb
PAH1420002	Black	SWB Fullsize	61 in	60.125 in	19.375 in	20.625 in	18.75 in	12.1 ft ³	53.0 lb
PAH1424000	Bright	Extra-Wide Fullsize	61 in	60.125 in	19.375 in	27.625 in	24.875 in	17 ft ³	68.0 lb
PAH1424002	Black	Extra-Wide Fullsize	61 in	60.125 in	19.375 in	27.625 in	24.875 in	17 ft ³	68.0 lb

ALUMINUM CHESTS

- Recessed hinge allows the lid to fully open when the back of the chest is placed against another object
- Rugged aluminum construction with reinforced lid for maximum strength and security
- Gas spring lid lifts allow easier access
- Leak proof stainless steel paddle handles prevent moisture from entering
- Full weatherstripping helps seal out moisture and dust
- Tapered lower front wall will fit better in trucks with all types of bed liners



Cat. No.	Color	Size	A	B	C	D	E	Usable Cu. Ft.	App. Ship Wt.
808000	Bright	36 in	36.75 in	36 in	15.5 in	17.25 in	17 in	5.1 ft ³	25.5 lb
899260	Bright	46 in	46.5 in	46 in	16.5 in	18.75 in	17.75 in	7 ft ³	44.0 lb
896260	Bright	58 in	59.5 in	58.5 in	17.875 in	18.75 in	17.75 in	9.8 ft ³	47.5 lb
896262	Black	58 in	59.5 in	58.5 in	17.875 in	18.75 in	17.75 in	9.8 ft ³	47.5 lb

Tough gets the job done.
Smart gets the job done right.

STEEL HEAVY DUTY CHEST

- High strength beveled edge lid
- Sliding tray for small parts and tools
- Leak proof stainless steel paddle handles prevent moisture from entering
- Dual gas spring lid lifts for easy opening lid
- Bulb-shaped automotive weather stripping
- Channel reinforced front panel
- One-piece box body construction
- Recessed hinge



Cat. No.	Color	Size	A	B	C	D	E	Usable Cu. Ft.	App. Ship Wt.
817980	White	Fullsize Steel	59.125 in	58.5 in	19 in	20.5 in	20.25 in	10.2 ft ³	129.0 lb

STEEL PORTABLE UTILITY CHESTS

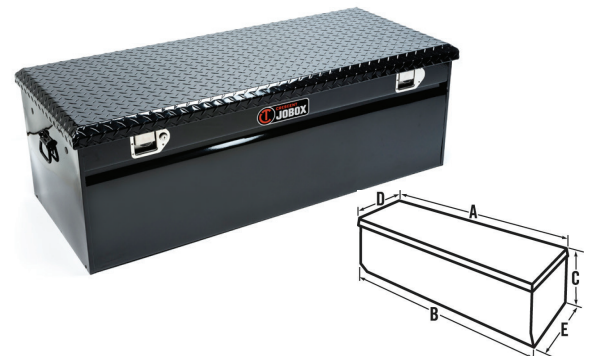
- 18-gauge steel construction with fully welded seams and formed edges
- Lock down chest and remove easily with quick connect brackets
- Sliding tray provides convenient storage for hand tools and small parts
- Full weatherstripping helps seal out moisture and dust
- Tough Armor-Brite® powder paint finish has superior rust resistance



Cat. No.	Color	Size	A	B	C	D	E	Usable Cu. Ft.	App. Ship Wt.
810000	White	32 in	32.625 in	32 in	12.75 in	11.25 in	10.75 in	2.2 ft ³	31.5 lb

HYBRID FULLSIZE PORTABLE CHEST

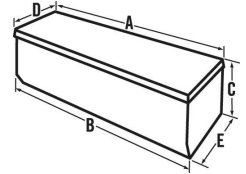
- Stylish tread plate aluminum lid with rigid steel base for support
- Removable and portable chest offers versatility where secure storage is needed
- Leak proof stainless steel paddle handles prevent moisture from entering
- Gas spring lid lifts automatically raise lid and allow for easier access
- Wide lifting handles are easy to grip and will support heavy loads
- Full weatherstripping helps seal out moisture and dust
- Rugged aluminum strikers will adjust horizontally to keep the lid locked down tight



Cat. No.	Color	Size	A	B	C	D	E	Usable Cu. Ft.	App. Ship Wt.
DYH1453002	Black	Fullsize	49 in	48 in	18 in	21 in	20 in	9.9 ft ³	50 lb

ALUMINUM PORTABLE CHESTS

- Removable and portable aluminum chests offer versatility wherever secure storage is needed
- Wide lifting handles are easy to grip and will support heavy loads
- Rugged aluminum strikers will adjust vertically and horizontally to keep the lid locked down tight
- Leak proof stainless steel paddle handles prevent moisture from entering
- Full weatherstripping helps seal out moisture and dust
- Gas spring lid lifts automatically raise lid and allows for easier access



Cat. No.	Color	Size	A	B	C	D	E	Usable Cu. Ft.	App. Ship Wt.
220000D	Bright	37" Long	37 in	36 in	14.5 in	18 in	20 in	5.4 ft ³	33.0 lb
221000D	Bright	49" Long	49 in	48 in	18 in	18 in	20 in	9.9 ft ³	43.0 lb
222000D	Bright	57" Long	57 in	56 in	18 in	18 in	20 in	11.6 ft ³	50.0 lb

TRUCK CHEST REPLACEMENT SHOCKS

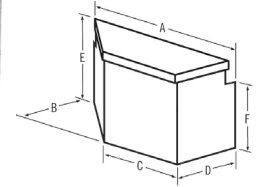


Item No.	Description	Shock
220000D	Aluminum Portable Chest	10159-56
221000D	Aluminum Portable Chest	10159-66
222000D	Aluminum Portable Chest	10159-56
808000	Aluminum Chest for Trucks	10159-31
896260	Aluminum Chest for Trucks	10159-70
896262	Aluminum Chest for Trucks	10159-70
1-350000	Gear-Lock™ Paddle Handle Aluminum Chest	10159-56
PAH1420000	Gear-Lock™ Aluminum Chest	10159-56
PAH1420002	Gear-Lock™ Aluminum Chest	10159-56
PAH1424000	Gear-Lock™ Aluminum Chest	10159-24
PAH1424002	Gear-Lock™ Aluminum Chest	10159-24
DYH1453002	Hybrid Full Size Portable Chest	10159-01
817980	Steel Heavy-Duty Chest	10159-70

Tough gets the job done.
Smart gets the job done right.

ALUMINUM TRAILER TONGUE BOXES

- Trailer tongue box mounts easily against rail or trailer wall
- Rugged aluminum construction with reinforced lid for maximum strength and security
- Offset gas spring lid lift allows easier access from drivers side
- Leak proof stainless steel paddle handles prevent moisture from entering
- Full weatherstripping helps seal out moisture and dust
- Tough Armor-Brite® powder paint finish has superior rust resistance



Cat. No.	Color	Size	A	B	C	D	E	Usable Cu. Ft.	App. Ship Wt.
405000D	Bright	33 in	33 in	16 in	20 in	17.5 in	20.5 in	4.5 ft ³	24.5 lb
410000D	Bright	48 in	48 in	18 in	25 in	21.5 in	20.5 in	7.1 ft ³	33.5 lb

TRAILER TONGUE REPLACEMENT SHOCKS



Item No.	Description	Shock
405000D	Aluminum Trailer Tongue Box	10159-71
410000D	Aluminum Trailer Tongue Box	10159-31

26" LONG FLOOR MODEL WITH THREE DRAWERS

- Extruded heavy-duty drawer glides support up to 75 lbs per drawer
- Latches automatically lock the drawers when closed
- Pins prevent the drawers from rolling off the glides
- Moveable dividers to create different size bins
- Heavy-gauge aluminum is light enough for easy mobility and durable enough to stand up to heavy loads on top of and inside drawers



Cat. No.	Length	Width	Height	Drawer Compartments	Number of Dividers	Usable Cu. Ft.	App. Ship Wt.
1405980	26 in	36 in	6 in	3	2	3.6 ft ³	51.0 lb

TONGUE BOXES

26" LONG STACKED MODEL WITH SIX DRAWERS



Cat. No.	Length	Width	Height	Drawer Compartments	Number of Dividers	Usable Cu. Ft.	App. Ship Wt.
1406980	26 in	36 in	12 in	6	2	7 ft ³	81.0 lb

50" LONG FLOOR MODELS



Cat. No.	Length	Width	Height	Drawer Compartments	Number of Dividers	Usable Cu. Ft.	App. Ship Wt.
1401980	50 in	12 in	6 in	1	5	2.5 ft ³	31.0 lb
1402980	50 in	24 in	6 in	2	5	5.1 ft ³	61.0 lb
1403980	50 in	36 in	6 in	3	5	7.6 ft ³	89.0 lb
1404980	50 in	48 in	6 in	4	5	10.1 ft ³	119.0 lb

DRAWER STORAGE

50" LONG STACKED MODELS



Cat. No.	Length	Width	Height	Drawer Compartments	Number of Dividers	Usable Cu. Ft.	App. Ship Wt.
1407980	50 in	12 in	12 in	2	5	5.1 ft ³	59.0 lb
1408980	50 in	12 in	18 in	3	5	7.6 ft ³	85.0 lb
1409980	50 in	12 in	24 in	4	5	10.1 ft ³	114.0 lb

Tough gets the job done.
Smart gets the job done right.

PLASTIC DRAWER DIVIDER

- For use with Crescent aluminum drawer storage products
- Moveable divider to create different size bins
- Can be used with the following Crescent Items: 1401980 through 1409980
- Customize storage with the addition of this divider
- Durable divider
- Sold as singles



Cat. No.	Length	Width	Height	Number of Dividers	App. Ship Wt.
1410980	0.125 in	11.5 in	4.5 in	1	0.2 lb

9" TALL DRAWER UNITS

- 14-gauge steel StorAll® drawer storage is designed to provide extreme durability and safety with unprecedented versatility
- Perfect for work trucks, trailers, and vans, StorAll® provides up to 50% more drawer weight capacity and up to 20% more storage capacity than competitors
- Drawers are customizable with adjustable front-to-rear dividers and bin dividers
- Grip-and-Release™ system allows safe opening and closing of heavy drawers on sloped surfaces
- Cabinet top and bottom reinforced with 12-gauge steel channels
- Built-in rain gutter channel, anti-skid strips, full bulb-shaped automotive weather stripping and 16-gauge galvanized movable bin dividers all benefit the user
- Steel plunger engages internal drawer stops, drawers have 650 lb. load rating and steel bearing tractors with 1,000 lb. rated bearings make for smooth drawer operation
- Recessed drawer fronts protect the handles from damage



Cat. No.	Color	Length	Width	Height	Drawer Compartments	Number of Dividers	Usable Cu. Ft.	App. Ship Wt.
661980	White	48 in	12 in	9 in	1	7	1 ft ³	115.0 lb
661982	Black	48 in	12 in	9 in	1	7	1 ft ³	115.0 lb
662980	White	48 in	24 in	9 in	2	13	2.3 ft ³	180.0 lb
662982	Black	48 in	24 in	9 in	2	13	2.3 ft ³	180.0 lb
663980	White	48 in	36 in	9 in	3	19	3.6 ft ³	222.0 lb
663982	Black	48 in	36 in	9 in	3	19	3.6 ft ³	222.0 lb
664980	White	48 in	48 in	9 in	4	24	5 ft ³	255.0 lb
664982	Black	48 in	48 in	9 in	4	24	5 ft ³	255.0 lb

DRAWER STORAGE

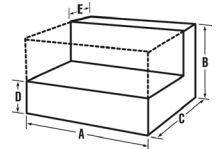
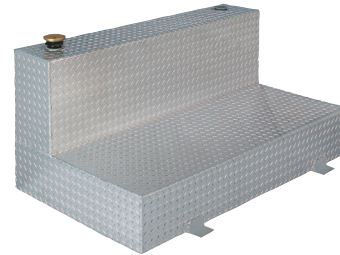
13" TALL DRAWER UNITS



Cat. No.	Color	Length	Width	Height	Drawer Compartments	Number of Dividers	Usable Cu. Ft.	App. Ship Wt.
665980	White	48 in	12 in	13 in	1	7	1.8 ft ³	155.0 lb
665982	Black	48 in	12 in	13 in	1	7	1.8 ft ³	155.0 lb
666980	White	48 in	24 in	13 in	2	13	4.2 ft ³	245.0 lb
666982	Black	48 in	24 in	13 in	2	13	4.2 ft ³	245.0 lb
667980	White	48 in	36 in	13 in	3	19	6.6 ft ³	305.0 lb
667982	Black	48 in	36 in	13 in	3	19	6.6 ft ³	305.0 lb
668980	White	48 in	48 in	13 in	4	24	9 ft ³	380.0 lb
668982	Black	48 in	48 in	13 in	4	24	9 ft ³	380.0 lb

ALUMINUM LIQUID TRANSFER TANKS

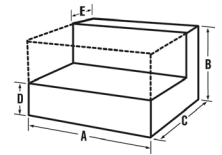
- Two full center baffles add extra strength and control the flow of the contents when moving
- 2" NPT reinforced bungs allow mounting a pump on either side of tank
- Four high strength brackets for securing the tank to the bed
- Lockable filler cap and coupler
- Heavy-duty 0.125" tread plate aluminum



Cat. No.	Color	Shape	Safe Fill (US)	Max Fill (US)	Capacity (US)	A	B	C	D	E	App. Ship Wt.
439000	Bright	Square	47 gal (US)	52 gal (US)	50 gal (US)	23.25 in	23.25 in	23.25 in	N/A	N/A	64.0 lb
438000	Bright	Rectangular	91 gal (US)	102 gal (US)	100 gal (US)	45.25 in	23.25 in	23.25 in	N/A	N/A	94.0 lb
437000	Bright	L-Shaped	99 gal (US)	104 gal (US)	100 gal (US)	57.5 in	25 in	31 in	9 in	10 in	112.0 lb

FUEL-N-TOOL COMBO ALUMINUM TRANSFER TANK

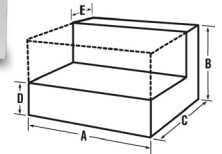
- Offers the convenience of a L-shaped transfer tank and a removable chest
- Two full center baffles add extra strength and control the flow of the contents when moving
- 2" NPT reinforced bungs allow mounting a pump on either side of the tank
- Four high strength brackets for securing the tank to the bed
- Leak proof stainless steel paddle handles prevent moisture and dirt from entering
- Chest provides 4.5 cubic feet of high-strength storage for tools and accessories
- RSLTM rigid structural lid, heavy-duty adjustable lid strikers, and high-strength body resist break-ins
- Self-rising lid has two heavy-duty gas spring lid lifts



Cat. No.	Color	Shape	Safe Fill (US)	Max Fill (US)	Capacity (US)	A	B	C	D	E	App. Ship Wt.
433000	Bright	L-Shaped	72 gal (US)	77 gal (US)	74 gal (US)	48.25 in	19 in	31 in	9 in	10.75 in	129.0 lb

STEEL TRANSFER TANKS

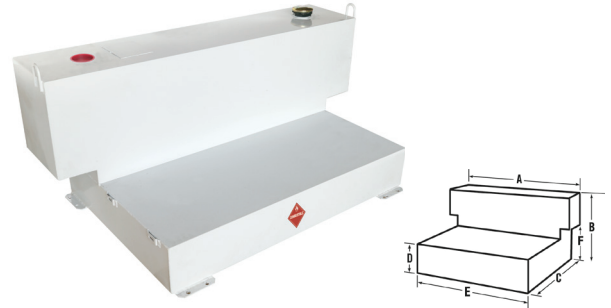
- Tanks have internal baffles for extra strength and to control the flow of contents when moving
- 2" NPT reinforced bungs allow mounting a pump on either side of the tank
- Built-in lifting rings to assist with lifting and moving an empty tank
- Lockable filler cap and coupler prevent excessive pressure build up
- Heavy-duty brackets to secure the tank to the truck bed
- Safety fill capacity allows space for the contents to expand in warm weather
- Drain plug allows for safe drainage of combustible liquids



Cat. No.	Color	Shape	Safe Fill (US)	Max Fill (US)	Capacity (US)	A	B	C	D	E	App. Ship Wt.
486000	White	Vertical	36 gal (US)	42 gal (US)	36 gal (US)	54 in	19 in	9 in	N/A	N/A	97.0 lb
485000	White	Square	50 gal (US)	55 gal (US)	50 gal (US)	23.25 in	24 in	23.25 in	N/A	N/A	85.5 lb
484000	White	Rectangle	96 gal (US)	107 gal (US)	100 gal (US)	45.63 in	24 in	23.25 in	N/A	N/A	145.0 lb
484002	Black	Rectangle	96 gal (US)	107 gal (US)	100 gal (US)	45.63 in	24 in	23.25 in	N/A	N/A	145.0 lb
488000	White	Low Profile L-Shaped	76 gal (US)	82 gal (US)	85 gal (US)	46 in	26 in	31 in	6.5 in	11 in	155.0 lb
488002	Black	Low Profile L-Shaped	76 gal (US)	82 gal (US)	85 gal (US)	46 in	26 in	31 in	6.5 in	11 in	155.0 lb
482000	White	L-Shaped	51 gal (US)	54 gal (US)	48 gal (US)	27 in	26 in	31 in	9 in	11 in	106.0 lb
487000	White	L-Shaped	88 gal (US)	92 gal (US)	88 gal (US)	54 in	25 in	31 in	6.5 in	11 in	186.0 lb
480000	White	L-Shaped	103 gal (US)	109 gal (US)	100 gal (US)	54 in	26 in	31 in	9 in	11 in	200.0 lb
480002	Black	L-Shaped	103 gal (US)	109 gal (US)	100 gal (US)	54 in	26 in	31 in	9 in	11 in	200.0 lb

STEEL TRANSFER TANKS FOR 4-DOOR TRUCKS

- Built-in lifting rings to assist with lifting and moving an empty tank
- Lockable filler cap and coupler prevent excessive pressure build up
- Heavy-duty brackets to secure the tank to the truck bed
- Safety fill capacity allows space for the contents to expand in warm weather
- 2" NPT reinforced bungs allow mounting a pump on either side of the tank
- Drain plug allows for safe drainage of combustible liquids



Cat. No.	Color	Shape	Safe Fill (US)	Max Fill (US)	Capacity (US)	A	B	C	D	E	App. Ship Wt.
498000	White	L-Shaped	98 gal (US)	106 gal (US)	100 gal (US)	60.25 in	25 in	33 in	7.5 in	48.25 in	175.0 lb
498002	Black	L-Shaped	98 gal (US)	106 gal (US)	100 gal (US)	60.25 in	25 in	33 in	7.5 in	48.25 in	175.0 lb

TRANSFER TANK REPLACEMENT SHOCKS



Item No.	Description	Fuel Cap	Shock
433000	Fuel-N-Tool Combo Aluminum Transfer Tank	DP3400	10159-66

TRADESMAN BACKPACK

- Professional grade backpack is ideal for everyday use, with an adjustable front pocket to hold large items like electrical cords
- 4 exterior pockets and 34 interior pockets for all parts as well as exterior pockets for the frequently used tools
- Hard polypropylene base resists moisture and withstands impacts, delivering lasting durability
- Bright orange interior helps you find your tools faster in darker environments
- Made with 1680D polyester and metal hardware to hold up on the toughest jobsite
- Inner sleeves are open at the bottom so small items won't get lost in narrow pockets
- Specialized magnetic pocket stores items for quick access
- Ergonomic handle is easy to grab and provides a comfortable, nonslip grip
- Includes a water bottle holder and a tape measure clip for added convenience
- Top-quality YKK zipper comes with a 3-year warranty and an oversized pull for added convenience



Cat. No.	Color	Depth	Height	Product Weight
CTB1000N	Rawhide, Black & Gray	14 in	18 in	8.000 lb

Tough gets the job done.
Smart gets the job done right.

CRESCENT TOOL BAGS

You're not average. Neither are these.

Superior tool organization combined with the quickest and easiest access, these bags are made to take the drops, drags, hits and misses that are just part of life on every jobsite.



CTB1000N

Magnetic-Closure Pocket

For easy access to keys, cell phone, and other frequently used items.

Zippered Interior Mesh Pockets

For quick view of contents

Large Adjustable Front Pocket

For easy access to bulk items like power cords

Tear-Resistant 1680D Ballistic Polyester and Metal Hardware

For maximum durability

Rugged Polypropylene Base

Built to protect your tools from impact and moisture

TRADESMAN CLOSED TOP TOOL BAGS

- Professional grade closed top bag is ideal for everyday use in rugged conditions
- 3 exterior pockets and a 29-pocket interior tool wall provide additional organization
- Hard polypropylene base resists moisture and withstands impacts, delivering lasting durability
- Bright orange interior helps you find your tools faster in darker environments
- Made with 1680D polyester and metal hardware to hold up on the toughest jobsite
- Interior and exterior PALS-style loops provide quick, easy access to your frequently used tools
- Inner sleeves are open at the bottom so small items won't get lost deep in narrow pockets
- Adjustable, padded shoulder strap and padded nonslip bar handle make carrying the bag more comfortable
- Includes a water bottle holder and a tape measure clip for added convenience
- Top-quality YKK zipper comes with a 3-year warranty and an oversized pull for added convenience



Cat. No.	Color	Depth	Height	Product Weight
CTB1450N	Rawhide, Black & Gray	14 in	14.5 in	5.220 lb
CTB1750N	Rawhide, Black & Gray	17 in	16.7 in	6.550 lb

TRADESMAN OPEN TOP TOOL BAGS

- Professional grade open top bag is ideal for everyday use in rugged conditions
- 17 interior and 8 exterior pockets line the bag, so you can keep your equipment in order
- Hard polypropylene base resists moisture and withstands impacts, delivering lasting durability
- Bright orange interior helps you find your tools faster in darker environments
- Tape measure clip for added convenience
- Made with 1680D polyester and metal hardware to hold up on the toughest jobsite
- Center metal handle meets durability standards and provides comfort while carrying the bag from job to job
- Adjustable, padded shoulder strap and padded nonslip bar handle make carrying the bag more comfortable
- Top-quality YKK zipper comes with a 3-year warranty and an oversized pull for added convenience



Cat. No.	Color	Depth	Height	Product Weight
CTB1410N	Rawhide, Black & Gray	14 in	14.5 in	5.510 lb
CTB1710N	Rawhide, Black & Gray	17 in	16 in	7.050 lb

20" CONTRACTOR TOOL BAG

- Professional grade contractor bulk bag is perfect for everyday use in rugged conditions
- 12 exterior and 19 interior pockets provide a variety of storage and organization options for materials, tools and small parts
- Hard polypropylene base resists moisture and withstands impacts, delivering lasting durability
- Bright orange interior helps you find your tools faster in darker environments
- Made with 1680D polyester and metal hardware to hold up on the toughest jobsite
- 13 PALS-style loops on the outside of the bag provide quick, easy access to your frequently used tools
- Two padded handles make carrying the bag more comfortable and distribute the bag's weight for added durability
- Padded shoulder strap provides convenient, hands-free transportation
- Top-quality YKK zipper comes with a 3-year warranty and an oversized pull for added convenience



Cat. No.	Color	Depth	Height	Product Weight
CTB2010N	Rawhide, Black & Gray	20 in	13 in	4.870 lb

TRADESMAN ROLLING TOOL BAG

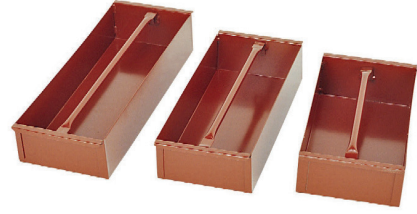
- Professional grade rolling bag is ideal for everyday use in rugged conditions
- 200-lb lid capacity allows you to carry all your tool bags together
- 2-way magnetic lid
- Bright orange interior helps you find your tools faster in darker environments
- 1680 denier ballistic weave material for rugged durability
- Ergonomically designed top handle and telescoping pull handle for comfort and easy mobility
- 35 total pockets for ultimate tool storage capability
- 6 interior and 7 exterior pockets line the bag, so you can keep your equipment in order
- 12 interior and 11 exterior PALS-style loops provide quick, easy access to your frequently used tools



Cat. No.	Color	Height	Product Weight
CTBR1850N	Rawhide, Black & Gray	18 in	15.590 lb

REMOVABLE TRAYS

- Built-in handles
- Convenient for hand tools and small parts
- Hemmed edges add strength and eliminate sharp edges
- Powder paint



Cat. No.	Length	Width	Height	Works With	Product Weight
626990	22.187 in	8 in	4 in	2-654990 2-655990 2-658990	8.000 lb
627990	28.187 in	8 in	4 in	2-656990	10.000 lb
628990	18.187 in	8 in	4 in	2-652990 2-653990	7.000 lb
620990	21.875 in	8 in	4 in	635990	6.000 lb

TOUCH UP PAINT

- Crescent JOBOX on site storage touch up paint
- Available in 12 oz cans
- Color is Crescent JOBOX red/rust



Cat. No.	Description	Product Weight
82936	Brown/Rust Touch Up Paint	1.100 lb

OPTIONAL CASTERS

- Heavy-duty wheels never puncture or go flat
- All purpose rubber tread for grip on many surfaces
- 3" x 3" hole patterns
- 6 in load rating: 3600 lb 4 in load rating 2800 lb
- 1-320990: Set of 4 casters comes with two fixed and two swivel casters
- 1-321990: Set of 4 fixed casters comes with two fixed and two plain swivel brakes
- 1-320993: Set of 4 casters comes with two fixed and two swivel casters with brakes



Cat. No.	Load Rating	Description	Length	Width	Height	Product Weight
1-320990	2800 lb	4" Casters Set of 4 - 2 Fixed & 2 Swivel	4.5 in	4.0 in	5.5 in	15.00 lb
1-321990	3600 lb	6" Casters Set of 4 - 2 Fixed & 2 Plain Swivel with Brakes	4.5 in	4.0 in	7.5 in	19.00 lb
1-320993	3600 lb	6" Casters Set of 4 - 2 Fixed and 2 Swivel with Brakes	4.5 in	4.0 in	7.5 in	18.00 lb

NO B.S. MEANS NO B.S.

Crescent Tools are designed, engineered, and tested to be More Than Tough, but we know that life happens and if your tool breaks you need a replacement fast. Crescent makes it simple with our NO B.S. WARRANTY.

JOBBOX NO B.S. 1-Year Warranty

Product Categories

- On-site Storage Products (chests, piano boxes, field offices, cabinets, rolling work benches)
- Transfer Tanks

JOBBOX NO B.S. 5-Year Warranty

Product Categories

- Crossovers
- Drawer Storage
- Innersides
- Topsides
- Trail Tongue Boxes
- Truck Chests
- Underbed Truck Boxes

Crescent Tool Storage NO B.S. 3-Year Warranty

Product Categories

- Crescent Tool Bags



**NO B.S.
LIFETIME
WARRANTY**

**MAX
DURABILITY
BUILT TO LAST**

**HIGH
VALUE
QUALITY PERFORMANCE**



MORE THAN TOUGH

— | —
We know it's not just horsepower,
but brainpower that gets the job done right.
— | —



NO B.S.
LIFETIME
WARRANTY