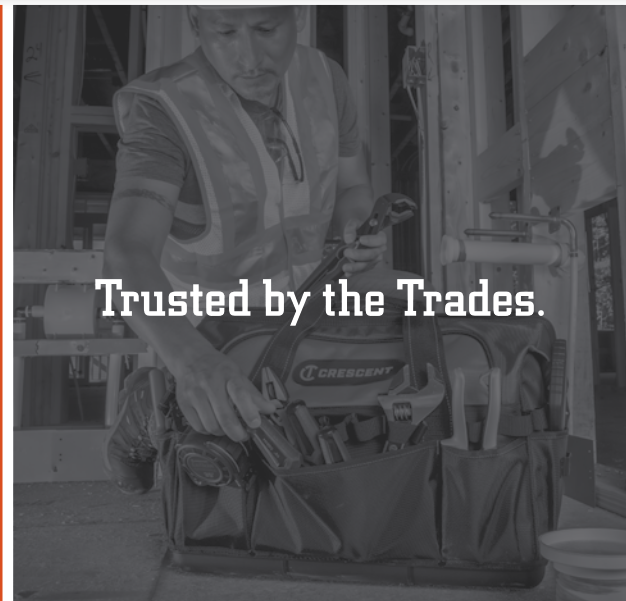




CRESCENT®

Tradesman Tool Bags



Trusted by the Trades.

The perfect bags for your everyday carry.

Introducing the new line of Crescent Tool Bags. Made for strength. Made to last. Made for the long haul. Every zipper you'll find on these bags comes with a 3-year guarantee. And every bag comes with a hard polypropylene base to keep your tools safe and dry. These bags are made to take the drops, drags, hits and misses that are just part of life on every jobsite.



Open Bags

Superior tool organization combined with quickest and easiest access.

- Open-bottom inner sleeves keep small tools and bits from being lost at bottom of narrow pockets
- Interior divider panel with large/small open-bottom sleeves to accommodate different-sized tools
- Quad-riveted tubular steel handle with high-durability comfort grip
- Sturdy D-ring attachment point
- Large side pockets and tape measure clip for added convenience

CTB1450 | 14" Open Bag

CTB1750 | 17" Open Bag



Backpack

A secure, organized tool storage solution that's easier to carry.

- Large zippered mesh-wall interior pockets for quick view of contents
- Large easy-access adjustable front pocket for bulky items like power cords
- D-ring attachment points (1 inside, 2 outside, with quick-release web strap)
- Large side pockets and tape measure clip for added convenience

CTB1000 | Backpack

Features:

Backpack features convenient **magnetic-closure pocket** for easy access to keys, cell phone, and other frequently used items



Bright interiors for improved tool visibility in low light conditions



YKK zippers allow secure closure and easy access. Guaranteed for 3 full years



PALS-style webbing for easy access to frequently used tools



Also Available:



Closed Bags

Tools stay out-of-sight, neat and clean... free from jobsite debris.

CTB1410 | 14" Closed Bag

CTB1710 | 17" Closed Bag



20" Contractor Bulk Bag

Better organization for tools both large and small

CTB2010 | 20" Contractor Bulk Bag





Crescent Tradesman Tool Bags... made tough to keep your tools in order and accessible.

DURABLE – All bags have a hard polypropylene base that's built to protect your tools from impact and moisture. And all zippered bags come with 3-year warranted YKK zippers.

ORGANIZED – Center panels separate tools and allow for additional storage sleeves. Sleeves are open-bottom design so small bits never get lost at the bottom of narrow pockets.

ACCESSIBLE – PALS-style webbing allows fast and easy access to frequently used tools. Bright orange interiors make it easier to see tools in low light conditions and dark jobsites.



CTB1450



CTB1410



CTB1750



CTB1710



CTB2010



CTB1000

Item No	Description	Pockets Outside	Pockets Inside	PALS	Product Package Dimensions	Product Weight
CTB1450	14" Closed Bag	3	29	13	14"L x 8.2"W x 14.5"H	5.2 lbs.
CTB1410	14" Open Bag	8	17	0	14"L x 9.6"W x 14.5"H	5.5 lbs.
CTB1750	17" Closed Bag	3	29	13	17"L x 9.5"W x 16.7"H	6.5 lbs.
CTB1710	17" Open Bag	8	14	0	17"L x 11"W x 16"H	7.0 lbs.
CTB2010	20" Contractor Bulk Bag	11	19	26	20"L x 12.2"W x 1.3"H	4.8 lbs.
CTB1000	Backpack	4	34 internal front pockets	0	14"L x 10"W x 18"H	8.0 lbs.

Register your 3-year zipper warranty at www.crescenttool.com/warranty